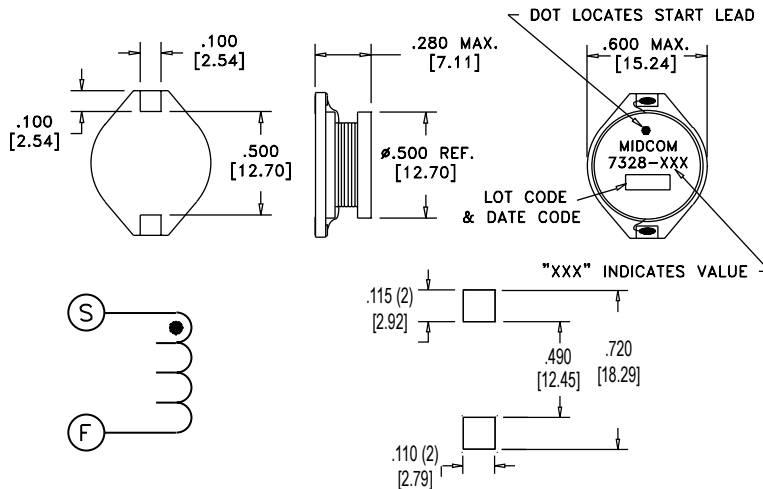


Surface Mount Drum Core Power Inductors: DUS-7328 Series



Part Number	(Note 1) Inductance uH +/- 20%	(Note 2) DCR (ohms max)	(Note 3) Isat (Adc)	(Note 4) Icont (Adc)
DUS-7328-R47R	0.47	0.008	20.00	9.08
DUS-7328-1R0R	1.0	0.009	20.00	8.60
DUS-7328-2R2R	2.2	0.014	16.00	7.10
DUS-7328-3R3R	3.3	0.015	14.00	6.20
DUS-7328-4R5R	4.5	0.016	13.00	5.70
DUS-7328-5R6R	5.6	0.020	12.00	5.30
DUS-7328-100R	10.0	0.031	10.00	4.30
DUS-7328-150R	15.0	0.036	8.00	4.00
DUS-7328-220R	22.0	0.047	7.00	3.50
DUS-7328-330R	33.0	0.066	5.50	3.00
DUS-7328-470R	47.0	0.086	4.50	2.60
DUS-7328-680R	68.0	0.130	3.50	2.30
DUS-7328-101R	100.0	0.190	3.00	1.80
DUS-7328-151R	150.0	0.250	2.60	1.50
DUS-7328-221R	220.0	0.380	2.40	1.20
DUS-7328-331R	330.0	0.560	1.90	1.00
DUS-7328-471R	470.0	0.850	1.40	0.82
DUS-7328-681R	680.0	1.100	1.20	0.72
DUS-7328-102R	1000.0	1.800	1.00	0.56

*Minimum inductance at Isat, 0.60 uH nominal inductance

NOTES:

- 1 Open circuit inductance test at 100KHz, 0.1 Vrms, 0.0Adc
- 2 DCR limits at 20°C
- 3 Saturating DC current for approximately 20% rolloff from initial inductance
- 4 Continuous DC current for approximate temperature rise of 40°C from a 25°C ambient

Features

- Economical, reliable SMD inductors
- Inductance range: 0.47 uH to 1000 uH
- Excellent current rating in a low-profile package
- High energy storage and extremely low resistance
- Excellent saturating (to 20A) and continuous current capabilities (to 9A)
- Designed for pick and place operations
- Compatible with solder reflow processes to 240°C
- Same footprint as DHC-7328 and DHC-7342 series

Applications

- Economical, high current inductors for DC/DC converter supplies
- Wide inductance range with high current for high-frequency, medium and low voltage supplies
- Inductors for DC/DC conversion circuits in notebook computer, peripheral, cellular phone, process control, factory automation and test industries
- Useful in medium current DC/DC converters

Environmental Specifications

- Operating temperature range: -40° to +85°C
- Storage temperature range: -50°C to +125°C

Packaging

- Parts are packaged in 32 mm embossed carrier tape per EIA-481-3
- DUS-7328 is packaged 400 pieces per 13" reel